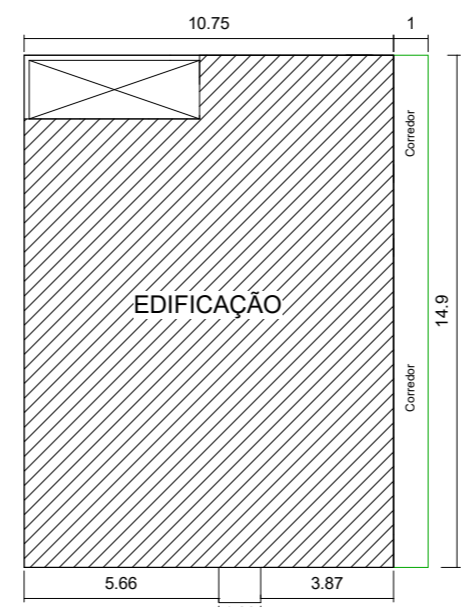
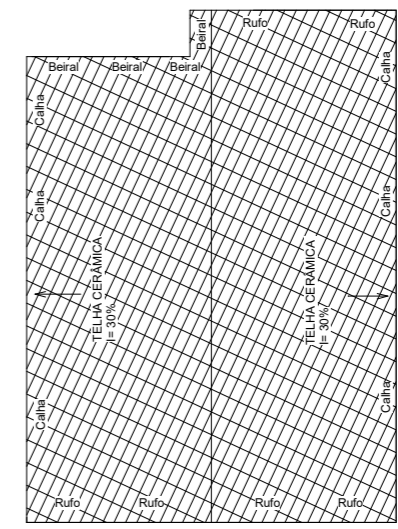


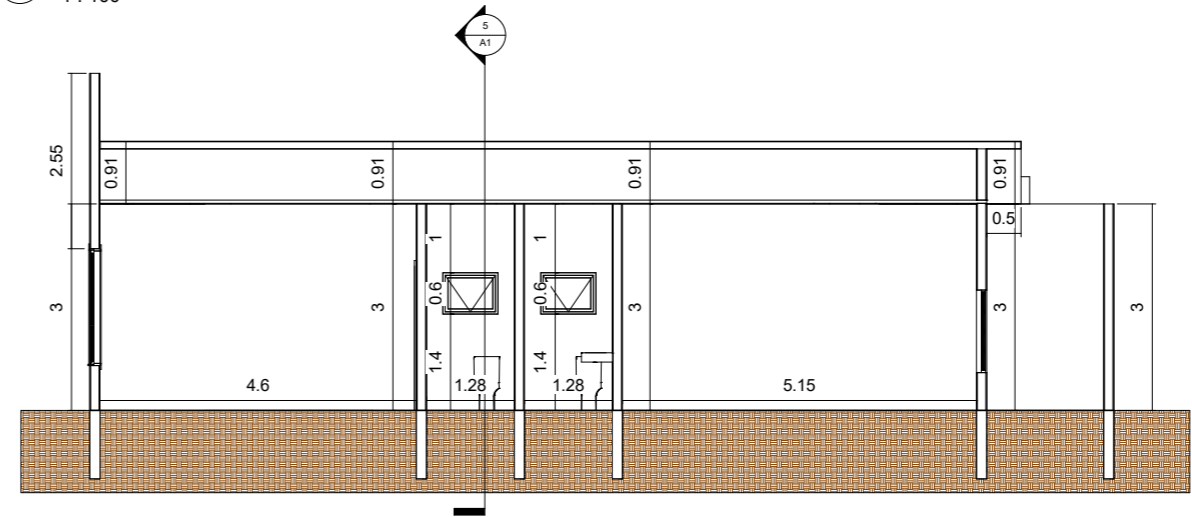
1 Planta Baixa
1 : 50



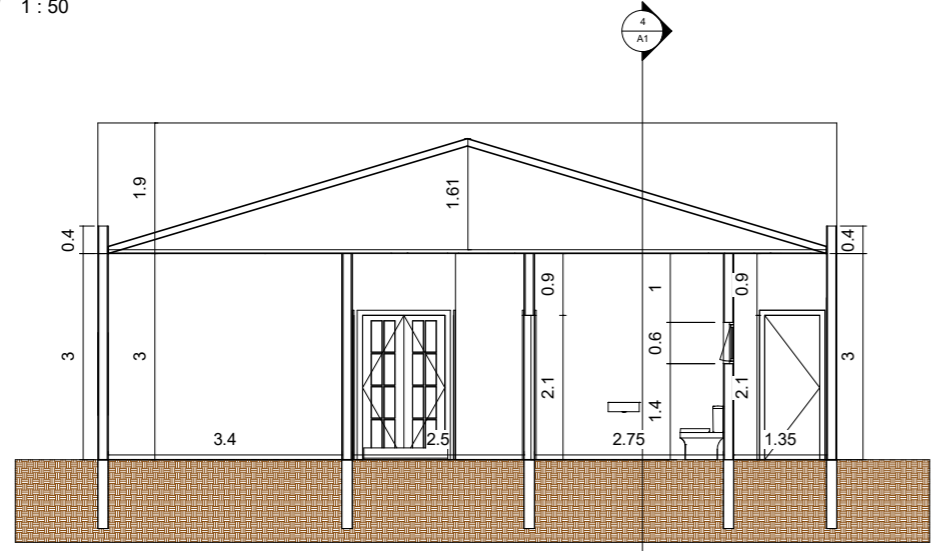
2 Implantação
1 : 100



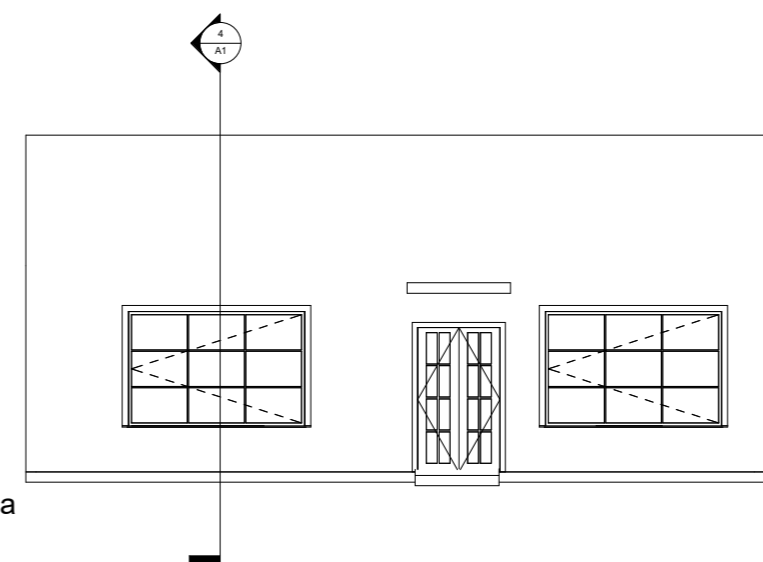
3 Telhado
1 : 100



4 Corte 1
1 : 50



5 Corte 2
1 : 50



6 Fachada
1 : 50

Prefeitura Municipal de Salto do Itararé	
Cras	
CRAS	
Data	0001
Área	160,175 m ²
Desenhadas por	Autor
Verificado por	Verificador
A1	
Escala	Como indicado